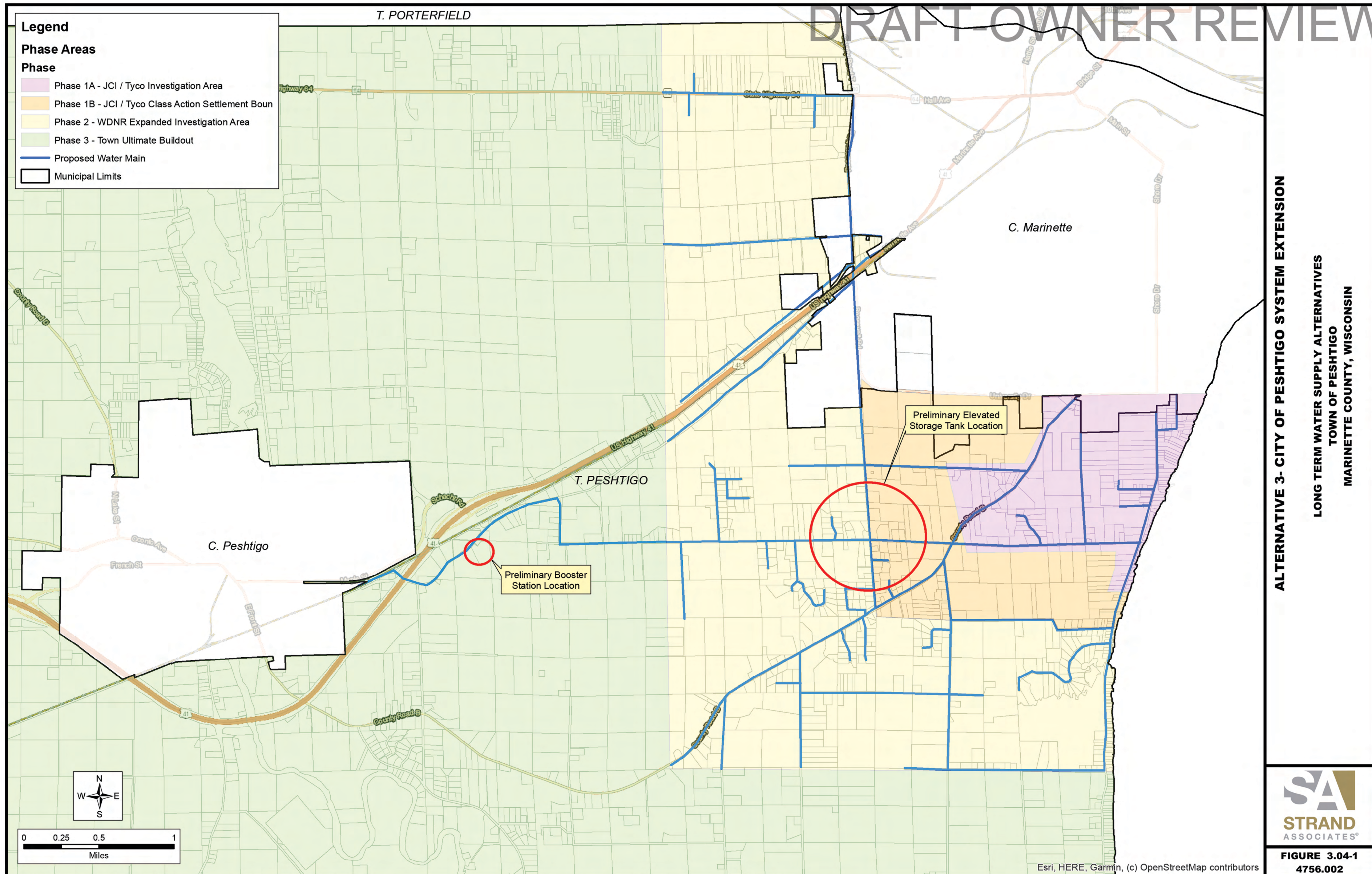


MUNICIPAL RETAIL DRAWINGS AND COSTS



CITY OF PESHTIGO
SELLS WATER
RETAIL

CAPITAL COSTS

1A) JCI STUDY AREA

Infrastructure - \$21,697,000
Operational - \$146,000 / Year

1B) SETTLEMENT AREA

Infrastructure - \$31,566,000
Operational - \$210,000 / Year

2) DNR EXPANDED SITE INVESTIGATION AREA

Infrastructure - \$75,184,000
Operational - \$486,000 / Year

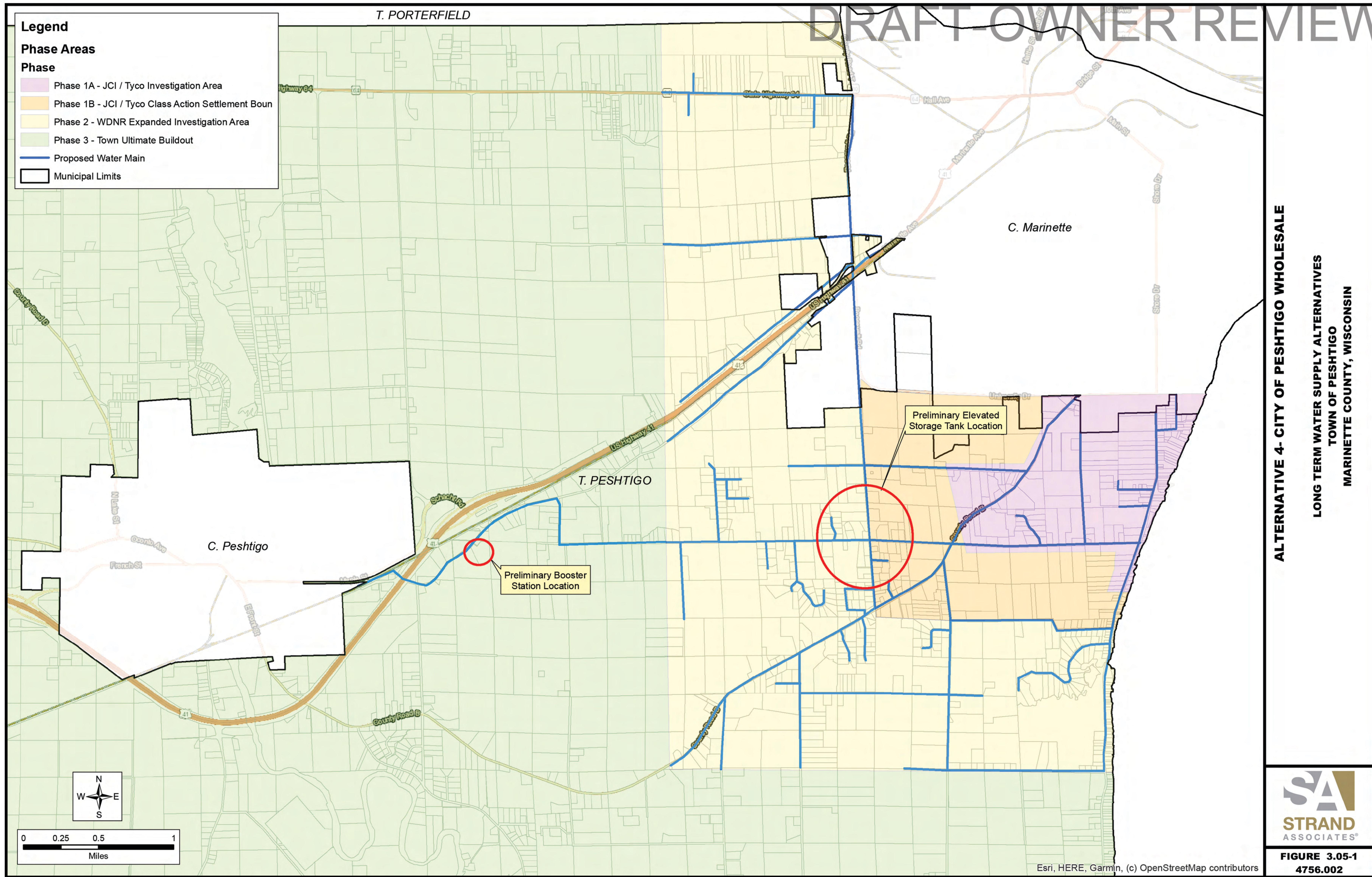
ALTERNATIVE 3 - CITY OF PESHTIGO SYSTEM EXTENSION

LONG TERM WATER SUPPLY ALTERNATIVES
TOWN OF PESHTIGO
MARINETTE COUNTY, WISCONSIN



FIGURE 3.04-1
4756.002

MUNICIPAL WHOLESALÉ DRAWINGS AND COSTS



CITY OF PESHTIGO
SELLS WATER
WHOLESALÉ

CAPITAL COSTS

1A) JCI STUDY AREA

Infrastructure - \$21,697,000
Operational - \$160,000 / Year

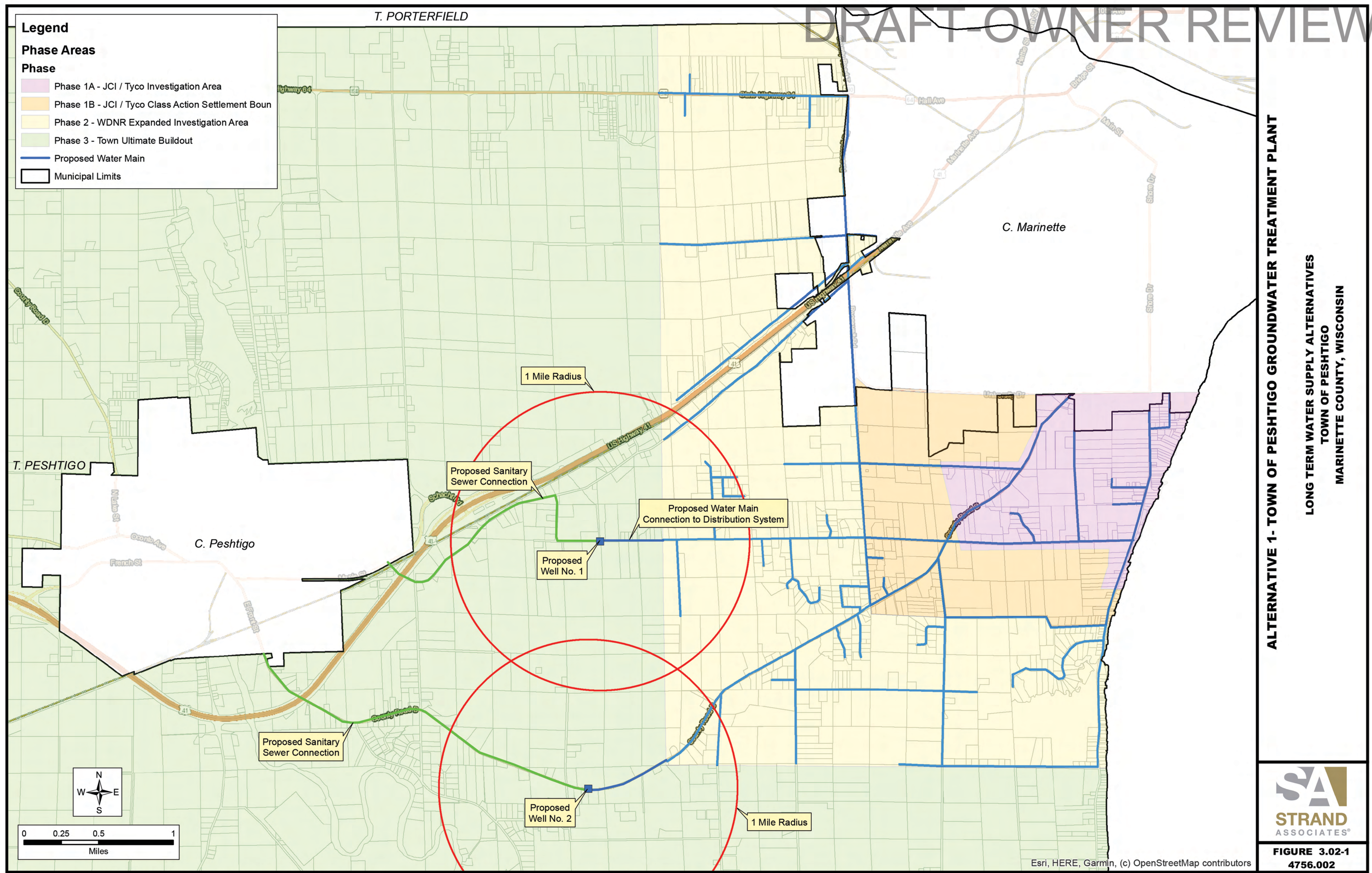
1B) SETTLEMENT AREA

Infrastructure - \$31,566,000
Operational - \$229,000 / Year

2) DNR EXPANDED SITE INVESTIGATION AREA

Infrastructure - \$75,184,000
Operational - \$533,000 / Year

GROUNDWATER (DEEP WELL) DRAWING AND COSTS



**DEEP WELL
OUTSIDE OF
PLUME**

CAPITAL COSTS

1A) JCI STUDY AREA
Infrastructure - \$30,994,000
Operational - \$326,000 / Year
1B) SETTLEMENT AREA
Infrastructure - \$41,808,000
Operational - \$358,000 / Year
2) DNR EXPANDED SITE INVESTIGATION AREA
Infrastructure - \$87,343,000
Operational - \$491,000 / Year

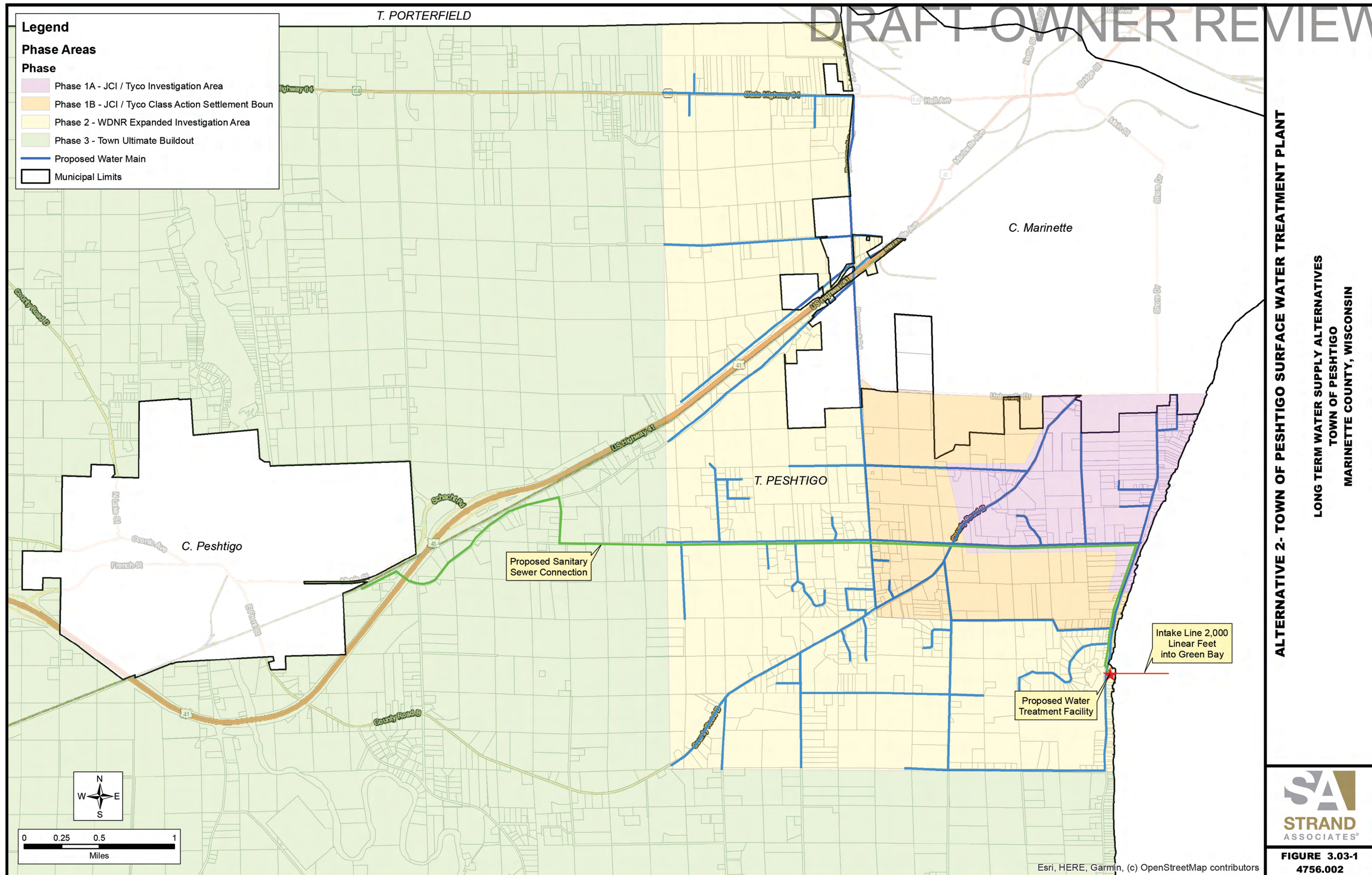
ALTERNATIVE 1- TOWN OF PESHTIGO GROUNDWATER TREATMENT PLANT

LONG TERM WATER SUPPLY ALTERNATIVES
TOWN OF PESHTIGO
MARINETTE COUNTY, WISCONSIN

STRAND ASSOCIATES

**FIGURE 3.02-1
4756.002**

SURFACE WATER DRAWING AND COSTS



SURFACE WATER
SOURCED FROM
BAY OF GREEN BAY

CAPITAL COSTS

1A) JCI STUDY AREA

Infrastructure - \$35,075,000
Operational - \$391,000 / Year

1B) SETTLEMENT AREA

Infrastructure - \$45,889,000
Operational - \$427,000 / Year

2) DNR EXPANDED SITE
INVESTIGATION AREA

Infrastructure - \$91,424,000
Operational - \$587,000 / Year



FIGURE 3.03-1
4756.002